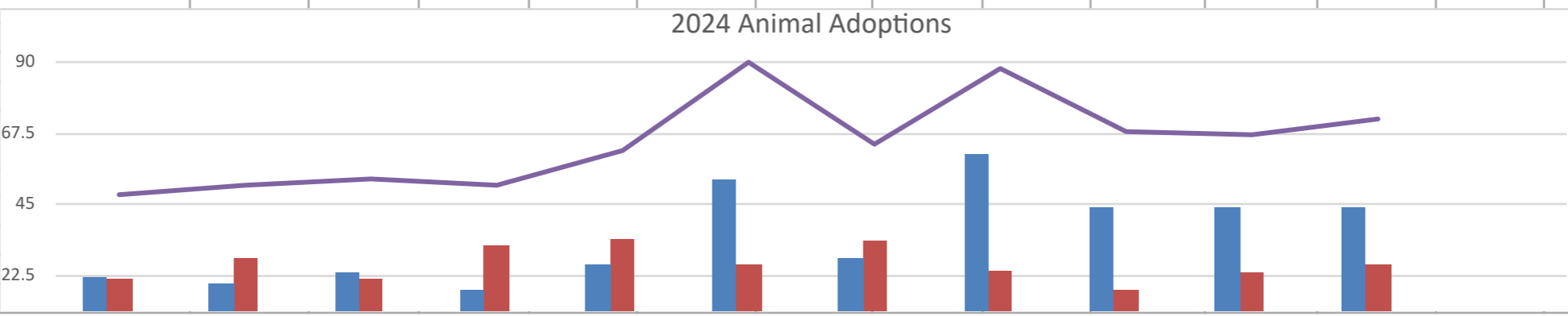
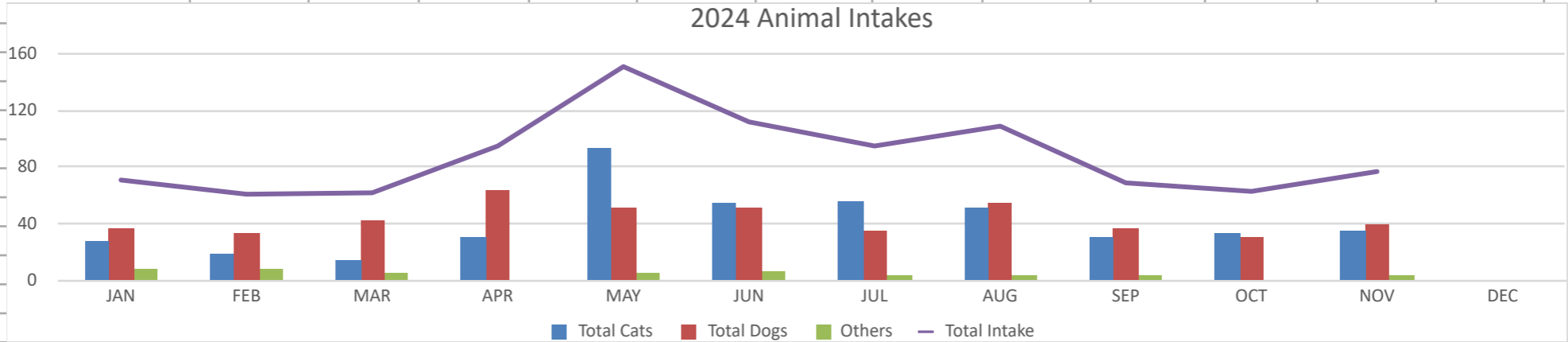
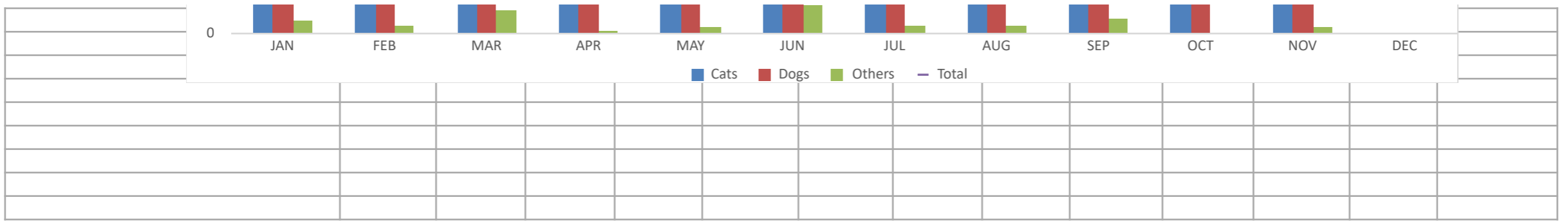


BRHA Monthly 2024 / YTD Statistics													
INTAKE	JAN	FEB	MAR	APR	MAY	JUN	JUL	AUG	SEP	OCT	NOV	DEC	YTD
Total Cats	27	19	14	30	94	54	56	52	30	33	35		444
Stray Cats	7	7	5	15	38	34	34	24	14	8	11		197
Owner Surrender Cats	9	12	6	5	42	7	21	27	14	24	20		187
Returned Adoption Cats	2	0	3	0	1	3	1	1	2	1	4		18
Cats Brought in by Agencies	0	0	0	0	0	0	0	0	0	0	2		2
Transferred In Cats	9	0	0	10	13	10	0	0	0	0	0		42
Total Dogs	36	34	43	64	52	51	35	54	36	30	39		474
Stray Dogs	14	18	18	17	23	21	20	20	19	13	18		201
Owner Surrender Dogs	16	15	20	31	20	25	8	15	9	10	18		187
Returned Adoption Dogs	1	1	1	1	2	3	3	2	2	3	0		19
Dogs Brought in by Agencies	8	3	2	6	3	4	4	3	4	2	3		42
Transferred in Dogs	2	0	2	8	3	0	0	18	13	2	0		48
Others	8	8	5	1	5	7	4	3	3	0	3		47
<i>Total Intake</i>	71	61	62	95	151	112	95	109	69	63	77	0	965
DISPOSITION													
Cats													
Adopted	22	20	23	18	26	53	28	61	44	44	44		383
Medical Euth	2	1	2	1	1	5	1	2	2	2	1		20
Ferral Euth	0	1	0	0	2	0	0	1	2	1	0		7
Born in care	0	0	0	0	7	10	0	0	0	0	0		17
Died in care	2	0	0	0	3	7	4	2	0	4	0		22
Reclaim	0	1	0	2	1	0	0	1	1	1	3		10
Transfer Out	0	0	0	0	0	0	0	0	0	3	0		3
<i>Total Cat Outcomes</i>	26	23	25	21	40	75	33	67	49	55	48	0	462
<i>Total EOM Cat Population</i>	38	37	23	32	92	85	109	95	72	51	34		
Dogs													
Adopted	21	28	21	32	34	26	33	24	18	23	26		286
Born in Care	8	0	0	0	0	0	0	0	0	0	0		8
Euth by Medical	0	1	1	0	0	0	0	0	1	3	0		6

Euth due to Aggression	1	0	2	2	1	1	1	2	1	0	0		11
Euth Court Ordered	0	0	0	2	0	0	0	0	0	0	0		2
Died in care	0	0	0	0	0	0	0	0	0	0	0		0
Reclaim	12	16	15	9	14	21	17	20	14	10	16		164
Transfer Out	1	0	3	0	1	0	0	0	2	4	0		11
Total Dog Outcomes	43	45	42	45	50	48	51	46	36	40	42	0	488
Total EOM Dog Population	39	30	29	38	36	38	24	29	32	30	26		
Others													
Other Adoptions	5	3	9	1	2	11	3	3	6	0	2		45
Other Died	0	0	0	0	0	0	0	0	0	0	0		0
Reclaim Other	0	0	0	0	0	0	0	0	0	0	0		0
Transfer Out	0	0	0	0	0	0	0	0	0	0	0		0
Other Born in Care	0	0	0	0	0	0	0	0	0	0	0		0
Others Brought in Agencies	0	0	0	0	0	0	0	0	0	0	0		0
Total Others Outcomes	5	3	9	1	2	11	3	3	6	0	2	0	45
Total EOM Other Population	1	6	1	1	4	0	1	3	1	0	1		
Total Monthly Disposition	74	71	76	67	92	134	87	116	91	95	92	0	995
ADOPTED	48	51	53	51	62	90	64	88	68	67	72	0	714
% Adopted	65%	72%	70%	76%	67%	67%	74%	76%	75%	71%	78%		72%
Transferred out	1	0	3	0	1	0	0	0	2	7	0	0	14
Transferred In	11	0	2	18	16	10	0	18	13	2	0	0	90
Born in Care	8	0	0	0	7	10	0	0	0	0	0	0	25
Euthanasia	3	3	5	5	4	6	2	5	6	6	1	0	46
% Euthanasia	4%	4%	7%	7%	4%	4%	2%	4%	7%	6%	1%		5%
Reclaim Dogs	86%	89%	83%	53%	61%	100%	85%	100%	74%	77%	89%		81%
Reclaim Cats	0%	14%	0%	13%	3%	0%	0%	4%	7%	13%	27%		7%
Overall Shelter Reclaim %	57%	68%	65%	34%	25%	38%	31%	48%	45%	52%	66%		48%
Died	2	0	0	0	3	7	4	2	0	4	0	0	22

YTD Disposition	74	145	221	288	380	514	605	731	822	917	1009		5706
Total Officer Intake	8	3	2	6	3	4	4	3	4	2	5	0	44
Adoption Totals													
	JAN	FEB	MAR	APR	MAY	JUN	JUL	AUG	SEP	OCT	NOV	DEC	
Cats	22	20	23	18	26	53	28	61	44	44	44		
Dogs	21	28	21	32	34	26	33	24	18	23	26		
Others	5	3	9	1	2	11	3	3	6	0	2		
Total	48	51	53	51	62	90	64	88	68	67	72		714
Length of Stay Mo													
	JAN	FEB	MAR	APR	MAY	JUN	JUL	AUG	SEP	OCT	NOV	DEC	
Cats	37.1	40.6	31.4	36.8	44.8	54.9	46.3	41.5	25.6	13.2	16		39.2
Dogs	26.6	9.6	21.4	18.5	29.3	13.9	11.3	19.5	16	10.8	6		18.1
Others	8.03	13.05	6.75	6	14.3	3.2	13	36.9	11.4	0	3.3		9.64
Average Total	28.7	19.5	22.7	24.9	38.6	33.6	31.3	30.4	19.6	12.1	8.43		22.31
													Year Average



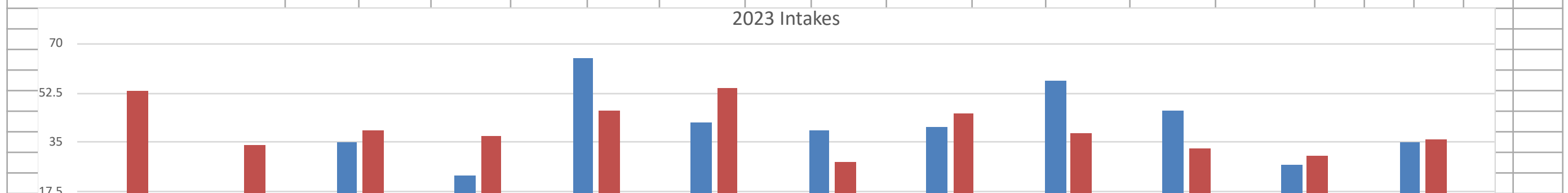


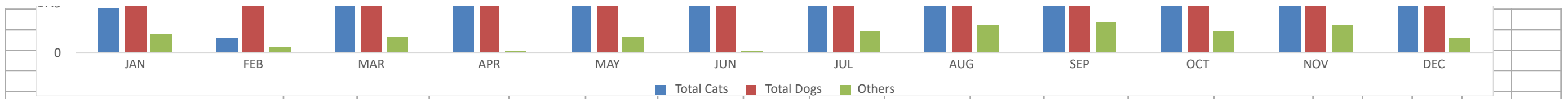
BRHA Monthly 2023 / YTD Statistics														
INTAKE	JAN	FEB	MAR	APR	MAY	JUN	JUL	AUG	SEP	OCT	NOV	DEC	YTD	
Total Cats	16	5	35	23	65	42	39	40	57	46	27	35	430	
Stray Cats	8	2	18	8	17	20	28	19	7	21	7	11	166	
Owner Surrender Cats	8	0	14	12	48	20	11	20	47	18	17	20	235	
Returned Adoption Cats	0	3	3	3	0	2	0	1	3	7	3	4	29	
Total Dogs	53	34	39	37	46	54	28	45	38	33	30	36	473	
Stray Dogs	17	22	14	20	22	25	26	22	26	20	11	17	242	
Owner Surrender Dogs	30	9	21	14	20	25	11	21	6	13	15	13	198	
Returned Adoption Dogs	4	1	4	2	4	4	4	2	6	0	1	1	33	
Others	7	2	6	1	6	1	8	10	11	8	10	5	75	
<i>Total Intake</i>	76	41	80	61	117	97	75	95	106	87	67	76	978	
DISPOSITION														
Cats														
Adopted	60	23	33	22	18	22	57	35	24	40	46	45	425	
Medical Euth	7	1	1	0	0	1	0	0	0	0	3	4	17	
Ferral Euth	0	0	1	2	0	2	0	1	0	0	0	2	8	
Born in care	6	0	0	0	0	0	0	0	0	0	0	0	6	
Died in care	0	0	0	0	1	6	3	1	1	4	5	0	21	
Reclaim	3	0	1	3	1	1	2	2	1	0	1	1	16	
Transfer Out	0	0	0	0	0	0	0	0	15	3	1	0	19	
<i>Total Cat Outcomes</i>	76	24	36	27	20	32	62	39	41	47	56	52	512	
<i>Total EOM Cat Population</i>	70	51	49	44	87	96	71	73	81	84	54	37		
Dogs														
Adopted	27	24	23	19	18	17	27	22	16	18	16	32	259	
Born in Care	0	0	7	0	0	0	0	0	0	0	0	8	15	
Euth by Medical	0	0	3	0	1	0	0	1	1	0	0	0	6	
Euth due to Aggression	1	0	2	0	0	0	0	0	2	0	2	0	7	
Euth Court Ordered	0	0	0	0	0	1	0	0	0	0	0	0	1	
Died in care	0	0	7	0	0	0	1	0	0	1	0	0	9	
Reclaim	16	15	9	18	21	19	12	19	18	13	12	11	183	
Transfer In	3	0	0	0	0	0	0	0	0	0	0	0	3	
Transfer Out	0	0	0	0	0	0	0	0	0	1	0	1	2	
<i>Total Dog Outcomes</i>	47	39	51	37	40	37	40	42	37	33	30	52	485	
<i>Total EOM Dog Population</i>	44	39	32	30	33	49	33	35	40	36	38	36		
Others														
Other Died	0	0	0	0	0	0	0	0	1	0	0	0	1	
Other Adoptions	6	3	6	6	5	4	0	6	4	4	0	2	46	
Reclaim Other	0	0	0	0	0	0	0	3	0	0	0	0	3	
Transfer Out	0	0	0	0	0	0	0	0	2	0	0	0	2	
Other Born in Care	0	0	0	0	0	0	0	0	0	0	0	0	0	

Total Others Outcomes	6	3	6	6	5	4	0	9	7	4	0	2	52
Total EOM Other Population	2	2	1	0	1	0	3	2	11	13	2	0	
Total Monthly Disposition	129	66	93	70	65	73	102	90	85	84	86	106	1049
ADOPTED	93	50	62	47	41	43	84	63	44	62	62	79	730
% Adopted	72%	76%	67%	67%	63%	59%	82%	70%	52%	74%	72%	75%	70%
Transferreed out	0	0	0	0	0	0	0	0	17	4	1	1	0
Transferred In	3	0	0	0	0	0	0	0	0	0	0	0	0
Born in Care	6	0	7	0	0	0	0	0	0	0	0	8	21
Euthanasia	8	1	7	2	1	4	0	2	3	0	5	6	39
% Euthanasia	6%	2%	8%	3%	2%	5%	0%	2%	4%	0%	6%	6%	4%
Reclaim	19	15	10	21	22	20	14	21	19	13	13	12	199
% Reclaim	15%	23%	11%	30%	34%	27%	14%	23%	22%	15%	15%	11%	19%
Died	0	0	7	0	1	6	4	1	1	5	5	0	30
YTD Disposition	129	66	93	70	65	73	102	90	85	84	86	106	1049
Officer Intake	8	10	7	6	7	9	5	3	6	4	5	4	74

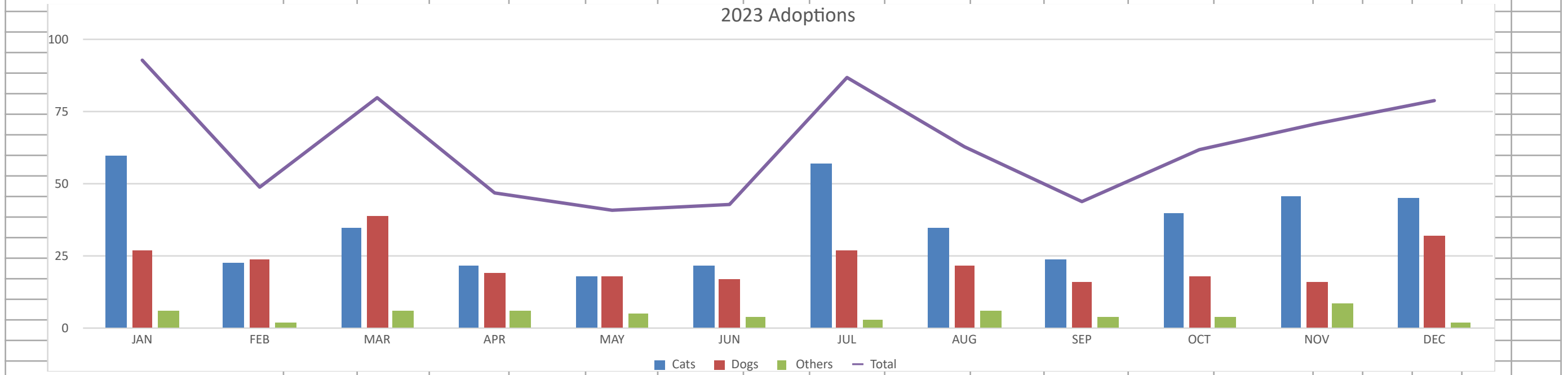
Adoptions

	JAN	FEB	MAR	APR	MAY	JUN	JUL	AUG	SEP	OCT	NOV	DEC
Cats	60	23	35	22	18	22	57	35	24	40	46	45
Dogs	27	24	39	19	18	17	27	22	16	18	16	32
Others	6	2	6	6	5	4	3	6	4	4	9	2
Total	93	49	80	47	41	43	87	63	44	62	71	79





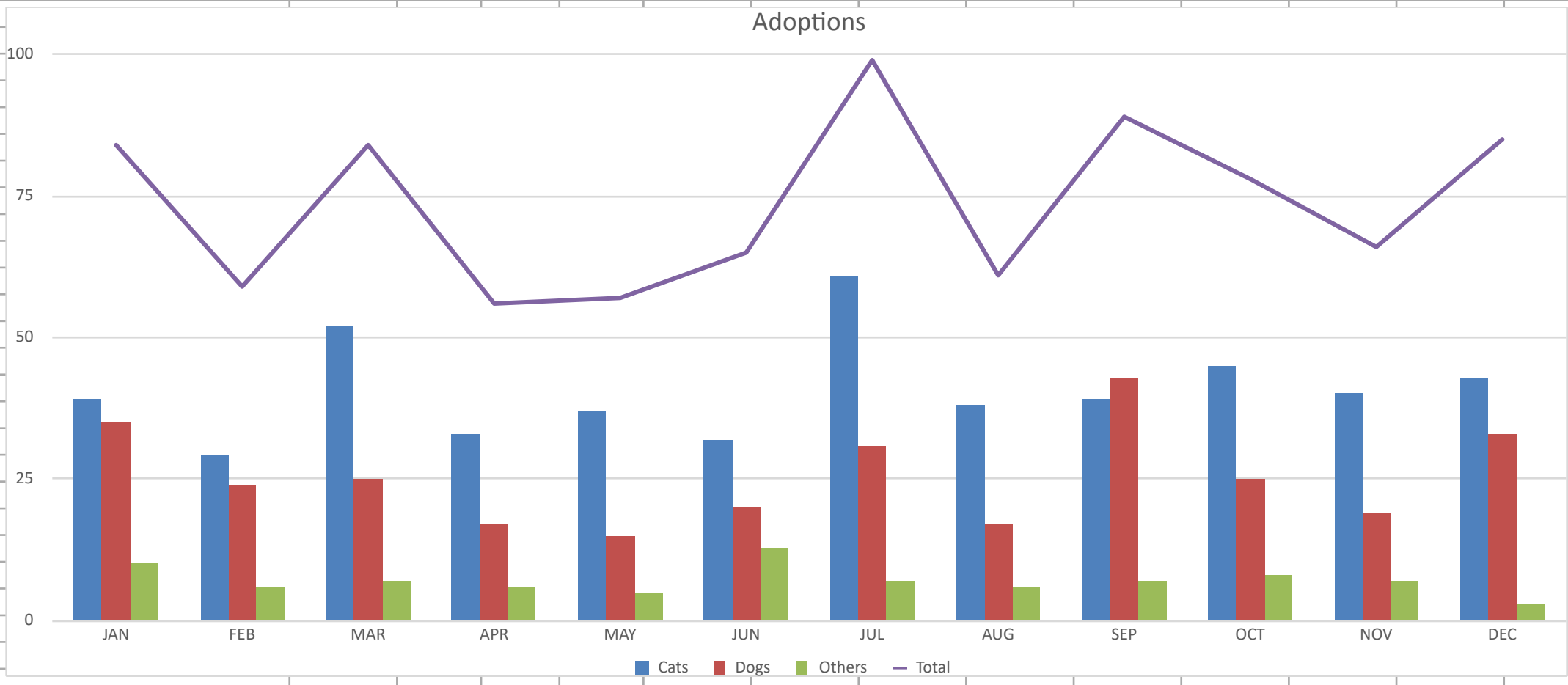
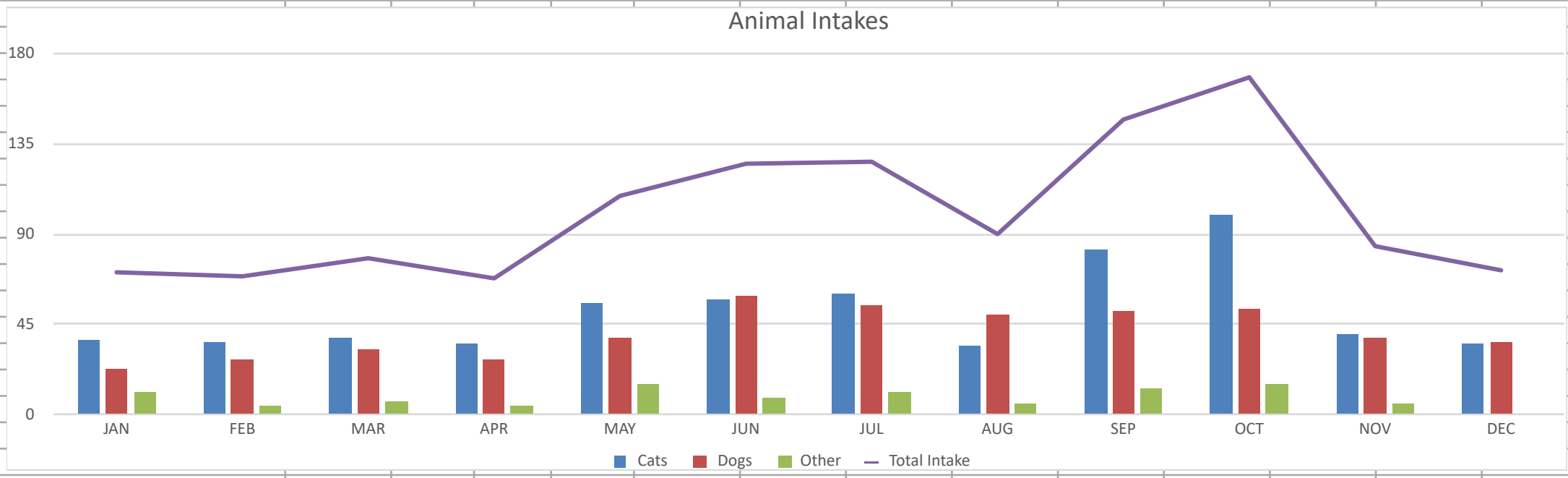
2023 Adoptions



BRHA Monthly 2022 / YTD Statistics

INTAKE	JAN	FEB	MAR	APR	MAY	JUN	JUL	AUG	SEP	OCT	NOV	DEC	YTD
Cats	37	36	38	35	56	57	60	34	82	100	40	35	610
Dogs	23	28	33	28	38	59	55	50	52	53	38	36	493
Other	11	5	7	5	15	9	11	6	13	15	6	1	104
Total Intake	71	69	78	68	109	125	126	90	147	168	84	72	1207
DISPOSITION													
Cats													
Adopted	39	29	52	33	37	32	61	38	39	45	40	40	485
Medical Euth	2	3	4	3	3	2	3	2	4	2	4	1	33
Ferral Euth	1	2	6	1	1	5	2	4	2	12	0	5	41
Born in care	0	0	0	0	14	12	8	0	0	16	8	0	58
Died in care	0	2	1	1	4	1	0	2	0	0	2	2	15
Reclaim	1	2	1	0	9	3	0	1	0	1	2	0	20
Transfer Out	0	0	0	0	0	0	0	0	0	0	0	0	0
Total Cat Outcomes		38	64	38	68	55	74	47	45	76	56	48	652
Total EOM Cat Population	100	97	77	73	73	89	84	66	103	143	139	128	
Dogs													
Adopted	35	24	25	17	15	20	31	17	43	25	19	33	304
Born in Care	0	0	0	0	0	0	0	0	0	0	0	0	0
Euth by Medical	2	0	0	1	0	3	0	3	1	1	0	0	11
Euth due to Aggression	1	2	0	1	1	0	2	8	0	1	0	1	17
Euth Court Ordered	0	0	0	0	0	0	0	0	0	0	0	0	0
Died in care	1	1	0	0	0	0	0	0	0	0	0	0	2
Reclaim	8	9	16	6	12	24	30	14	21	21	11	8	180
Transfer In	0	0	0	2	3	0	0	0	0	3	0	2	10
Transfer Out	0	0	0	0	1	0	1	1	4	2	2	0	11
Total Dog Outcomes	47	36	41	27	37	47	64	43	69	53	32	43	539
Total EOM Dog Population	41	33	27	32	42	57	49	53	36	38	44	40	
Others													
Other Died	0	0	0	0	1	3	0	0	4	2	1	0	11
Other Adoptions	10	6	7	6	5	13	7	6	7	8	7	3	85
Reclaim Other	0	0	0	0	0	0	0	0	0	0	0	0	0
Transfer Out	0	0	0	0	0	0	0	0	0	0	0	0	0
Other Born in Care	0	0	0	0	0	0	0	0	0	0	0	0	0
Total Others Outcomes	10	6	7	6	6	16	7	6	11	10	8	3	96
Total EOM Other Population	6	5	5	7	13	3	8	7	10	4	3	1	
Total Monthly Disposition	57	80	112	71	111	118	145	96	125	139	96	94	1244
ADOPTED	84	59	84	56	57	65	99	61	89	78	26	76	834
% Adopted	147%	74%	75%	79%	51%	55%	68%	64%	71%	56%	27%	81%	67%
Transferreed out	0	0	0	0	1	0	1	1	4	2	2	0	11
Transferred In	0	0	0	2	3	0	0	0	0	3	0	2	10
Born in Care	0	0	0	0	14	12	8	0	0	16	8	0	58
Euthanasia	6	7	0	6	5	10	7	17	7	16	4	7	92
% Euthanasia	11%	9%	0%	8%	5%	8%	5%	18%	6%	12%	4%	7%	7%
Reclaim	9	11	17	6	21	27	30	15	21	22	13	8	200

% Reclaim	16%	14%	15%	8%	19%	23%	21%	16%	17%	16%	14%	9%	16%
Died	1	3	1	1	4	1	0	2	0	0	2	2	17
YTD Disposition	57	80	112	71	111	118	145	96	125	139	96	94	1244
Officer Intake	6	6	8	4	5	4	12	9	10	8	15	13	100



Adoptions																		
	JAN	FEB	MAR	APR	MAY	JUN	JUL	AUG	SEP	OCT	NOV	DEC						
Cats	39	29	52	33	37	32	61	38	39	45	40	43						
Dogs	35	24	25	17	15	20	31	17	43	25	19	33						
Others	10	6	7	6	5	13	7	6	7	8	7	3						
Total	84	59	84	56	57	65	99	61	89	78	66	85	883					

BRHA Monthly 2021 / YTD Statistics													
INTAKE	JAN	FEB	MAR	APR	MAY	JUN	JUL	AUG	SEP	OCT	NOV	DEC	YTD
Cats	25	50	49	29	68	94	42	30	45	52	52	40	576
Dogs	29	31	34	35	25	39	41	14	22	61	27	65	423
Other	5	2	9	0	5	1	7	3	3	8	3	20	66
Total Intake	59	83	92	64	98	134	90	47	70	121	82	125	1065
DISPOSITION													
Cats													
Adopted	30	29	27	33	22	35	34	27	51	39	39	47	413
Medical Euth	0	0	3	1	5	10	3	5	7	0	2	1	37
Ferral Euth	0	0	0	0	0	0	0	0	0	2	5	2	9
Born in care	0	0	0	4	17	12	0	10	6	2	0	0	51
Died in care	0	0	0	2	6	13	2	4	2	0	1	4	34
Reclaim	4	5	3	2	4	3	1	1	5	8	2	0	38
Transfer Out	0	4	0	0	0	0	0	0	0	0	0	0	4
Total Cats	34	38	33	42	54	73	40	47	71	51	49	54	586
Dogs													
Adopted	5	16	10	17	11	15	9	5	11	17	17	28	161
Born in Care	0	0	0	0	3	0	0	0	0	0	0	0	3
Euth by Medical	0	0	0	0	3	0	0	0	0	0	0	0	3
Euth due to	0	0	2	2	3	7	1	3	3	5	1	2	29
Euth Court Ordered	0	0	0	0	0	0	0	0	0	0	0	1	1
Died in care	0	0	0	0	3	0	0	0	1	0	0	0	4
Reclaim	8	9	17	9	7	16	26	6	15	22	10	14	159
Transfer In	0	1	4	1	0	3	0	0	0	0	0	23	32
Transfer Out	0	8	1	1	1	0	0	0	0	0	0	0	11
Total Dogs	13	34	34	30	31	41	36	14	30	44	28	68	403
Others													
Other Died	0	0	0	0	0	0	0	0	0	0	0	1	1
Other Adoptions	5	2	3	6	1	1	1	10	3	8	4	18	62
Reclaim Other	0	0	0	0	0	0	0	0	0	0	0	0	0
Transfer Out	0	0	0	0	0	0	0	0	0	0	0	0	0
Other Born in Care	0	0	0	0	0	0	0	0	0	0	0	0	0
Total Others	5	2	3	6	1	1	1	10	3	8	4	19	63
Total Monthly Disposition	52	74	70	78	86	115	77	71	104	103	81	141	1052
ADOPTED	40	47	40	56	34	51	44	42	65	64	60	93	636
% Adopted	77%	64%	57%	72%	40%	44%	57%	59%	63%	62%	74%	66%	60%
Transferred out	0	12	1	1	1	0	0	0	0	0	0	0	15
Transferred In	0	1	4	1	0	3	0	0	0	0	0	23	32
Born in Care	0	0	0	0	3	12	0	0	0	0	0	0	15
Euthanasia	0	0	5	3	11	17	4	8	10	7	8	6	79
% Euthanasia	0%	0%	7%	4%	13%	15%	5%	11%	10%	7%	10%	4%	8%
Reclaim	12	14	20	11	11	19	27	7	20	30	12	14	197
% Reclaim	23%	19%	29%	14%	13%	17%	35%	10%	19%	29%	15%	10%	19%
Died	0	0	0	2	9	13	2	4	3	0	1	4	38
YTD Disposition	52	74	70	78	86	115	77	71	104	103	81	141	1052
Officer Intake	4	4	10	1	6	4	3	4	6	20	5	7	74

BRHA Monthly 2020 December / YTD Statistics													
INTAKE	JAN	FEB	MAR	APR	MAY	JUN	JUL	AUG	SEP	OCT	NOV	DEC	YTD
Cats	24	28	21	22	54	57	52	103	110	43	47	26	587
Dogs	27	37	29	49	50	23	41	33	39	32	21	27	408
Other	10	2	7	4	3	8	14	3	3	8	8	10	80
Total Intake	61	67	57	75	107	88	107	139	152	83	76	63	1075
DISPOSITION													
Cats													
Adopted	30	19	25	26	21	39	38	56	26	49	64	31	424
Medical Euth	0	1	2	0	1	7	2	2	4	1	4	2	26
Ferral Euth	1	2	0	0	0	0	0	0	0	0	0	0	3
Born in care	0	0	0	0	0	0	0	7	0	0	0	0	7
Died in care	0	0	1	0	2	2	1	21	2	5	1	0	35
Reclaim	1	3	0	0	1	2	1	0	5	5	5	0	23
Transfer Out	12	0	0	0	0	0	0	0	0	0	1	0	13
Total Cats	44	25	28	26	25	50	42	86	37	60	75	33	531
Dogs													
Adopted	24	22	11	22	25	15	15	11	14	10	10	21	200
Born in Care	0	0	0	0	0	0	0	0	0	0	0	0	0
Euth by Medical	0	0	0	2	0	0	1	0	0	0	1	0	4
Euth due to Aggression	0	0	12	2	0	6	0	0	4	4	3	0	31
Euth Court Ordered	0	0	1	0	0	0	0	1	0	0	0	0	2
Died in care	0	0	0	0	0	0	0	0	0	0	0	0	0
Reclaim	11	12	10	21	20	14	22	18	15	22	9	10	184
Transfer In	0	1	1	0	0	0	0	0	0	0	0	0	2
Transfer Out	7	5	0	1	0	0	0	0	1	0	0	0	14
Total Dogs	42	40	35	48	45	35	38	30	34	36	23	31	437
OTHERS													
Other Died	1	1	0	0	0	0	0	1	0	0	0	0	3
Other Adoptions	5	7	1	4	3	8	1	2	2	6	3	10	52
Reclaim Other	0	0	0	0	0	0	0	0	0	0	0	0	0
Transfer Out	0	0	0	0	0	0	0	0	0	0	3	0	3
Other Born in Care	0	7	0	0	0	0	0	0	0	0	0	0	7
Total Others	6	15	1	4	3	8	1	3	2	6	6	10	65
Total Monthly Disposition	92	80	64	78	73	93	81	119	73	102	104	74	1033
ADOPTED	59	52	39	47	47	74	57	70	73	65	77	62	722
% Adopted	64%	65%	61%	60%	64%	80%	70%	59%	100%	64%	74%	84%	70%
Transferreed out	19	5	0	1	0	0	0	0	1	0	4	0	30
Transferred In	0	1	1	0	0	0	0	0	0	0	0	0	2
Born in Care	0	0	0	0	0	0	0	0	0	0	0	0	0
Euthanasia	1	3	15	4	1	13	3	3	8	5	8	2	66
% Euthanasia	1%	4%	23%	5%	1%	14%	4%	3%	11%	5%	8%	3%	6%
Reclaim	12	15	10	21	21	16	23	18	20	27	14	10	207
% Reclaim	13%	19%	16%	27%	29%	17%	28%	15%	27%	26%	13%	14%	20%
Died	0	0	1	0	2	2	1	22	2	5	1	0	36
YTD Disposition	92	80	64	78	73	93	81	119	73	102	104	74	1033
Officer Intake	5	4	6	2	14	8	9	7	5	7	0	4	71