

## BRHA Monthly 2025 /

<b>INTAKE</b>	<b>JAN</b>	<b>FEB</b>	<b>MAR</b>	<b>APR</b>	<b>MAY</b>
<b>Total Cats</b>	<b>31</b>				
Stray Cats	7				
Owner Surrender Cats	20				
Returned Adoption Cats	3				
Cats Brought in by Agencies	1				
Transferred In Cats	0				
<b>Total Dogs</b>	<b>68</b>				
Stray Dogs	15				
Owner Surrender Dogs	24				
Returned Adoption Dogs	8				
Dogs Brought in by Agencies	3				
Transferred in Dogs	21				
<b>Others</b>	<b>2</b>				
<i>Total Intake</i>	<b>101</b>	<b>0</b>	<b>0</b>	<b>0</b>	<b>0</b>
<b>DISPOSITION</b>					
<b>Cats</b>					
Adopted	34				
Medical Euth	1				
Ferral Euth	0				
Born in care	0				
Died in care	0				
Reclaim	1				
Transfer Out	0				
<i>Total Cat Outcomes</i>	<b>36</b>	<b>0</b>	<b>0</b>	<b>0</b>	<b>0</b>
<i>Total EOM Cat Population</i>	<b>28</b>	<b>0</b>	<b>0</b>	<b>0</b>	<b>0</b>
<b>Dogs</b>					
Adopted	31				
Born in Care	0				
Euth by Medical	1				
Euth due to Aggression	1				
Euth Court Ordered	0				
Died in care	0				
Reclaim	14				
Transfer Out	0				
<i>Total Dog Outcomes</i>	<b>47</b>	<b>0</b>	<b>0</b>	<b>0</b>	<b>0</b>
<i>Total EOM Dog Population</i>	<b>55</b>	<b>0</b>	<b>0</b>	<b>0</b>	<b>0</b>
<b>Others</b>					
Other Adoptions	5				
Other Died	0				
Reclaim Other	0				

Transfer Out	0				
Other Born in Care	0				
Others Brought in Agencies	0				
<b>Total Others Outcomes</b>	<b>5</b>	<b>0</b>	<b>0</b>	<b>0</b>	<b>0</b>
<b>Total EOM Other Population</b>	<b>2</b>	<b>0</b>	<b>0</b>	<b>0</b>	<b>0</b>
<b>Total Monthly Disposition</b>	<b>88</b>	<b>0</b>	<b>0</b>	<b>0</b>	<b>0</b>
<b>ADOPTED</b>	70	0	0	0	0
<b>% Adopted</b>	80%				
<b>Transferreed out</b>	0	0	0	0	0
<b>Transferred In</b>	21	0	0	0	0
<b>Born in Care</b>	0	0	0	0	0
<b>Euthanasia</b>	3	0	0	0	0
<b>% Euthanasia</b>	3%				
<b>Reclaim Dogs</b>	93%				
<b>Reclaim Cats</b>	14%				
<b>Overall Shelter Reclaim %</b>	68%				
<b>Died</b>	0	0	0	0	0
<b>YTD Disposition</b>	<b>88</b>	<b>88</b>	<b>88</b>	<b>88</b>	<b>88</b>
<b>Total Officer Intake</b>	4	0	0	0	0

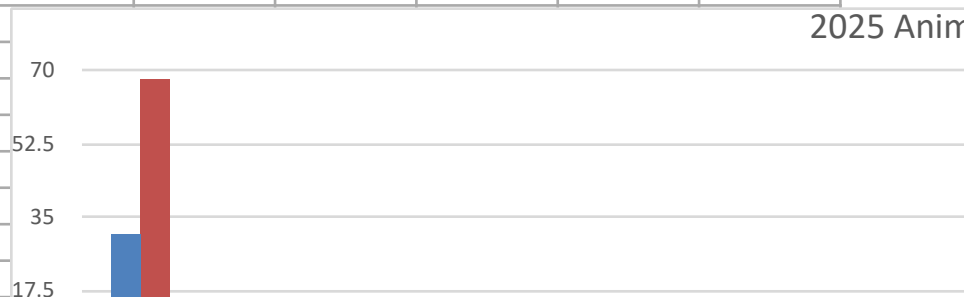
Adoption Totals

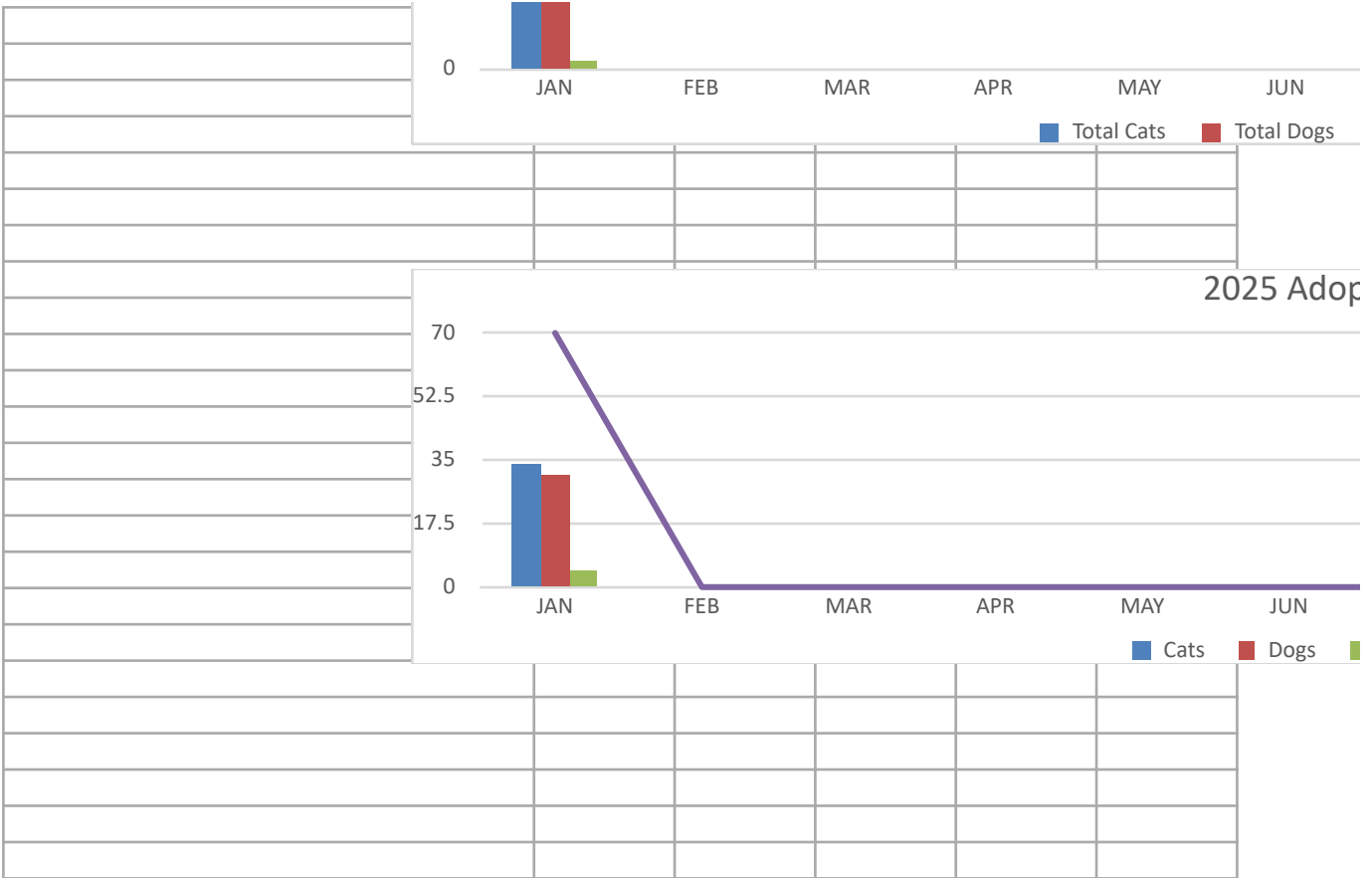
	JAN	FEB	MAR	APR	MAY
Cats	34	0	0	0	0
Dogs	31	0	0	0	0
Others	5	0	0	0	0
Total	70	0	0	0	0

Legnth of Stay Me

	JAN	FEB	MAR	APR	MAY
Cats	14.7				
Dogs	8.2				
Others	3				
Average Total	10.1				

2025 Anir





**YTD Statistics**

JUN	JUL	AUG	SEP	OCT	NOV	DEC	YTD
							31
							7
							20
							3
							1
							0
							68
							15
							24
							8
							3
							21
							2
0	0	0	0	0	0	0	101
							34
							1
							0
							0
							0
							1
							0
0	0	0	0	0	0	0	36
0	0	0	0	0	0	0	
							31
							0
							1
							1
							0
							0
							14
							0
0	0	0	0	0	0	0	47
0	0	0	0	0	0	0	
							5
							0
							0

								0
								0
								0
0	0	0	0	0	0	0	0	5
0	0	0	0	0	0	0	0	
0	0	0	0	0	0	0	0	88
0	0	0	0	0	0	0	0	70
								80%
0	0	0	0	0	0	0	0	0
0	0	0	0	0	0	0	0	21
0	0	0	0	0	0	0	0	0
0	0	0	0	0	0	0	0	3
								3%
0	0	0	0	0	0	0	0	0
88	88	88	88	88	88	88	88	1056
0	0	0	0	0	0	0	0	4

JUN	JUL	AUG	SEP	OCT	NOV	DEC	
0	0	0	0	0	0	0	
0	0	0	0	0	0	0	
0	0	0	0	0	0	0	
0	0	0	0	0	0	0	70

JUN	JUL	AUG	SEP	OCT	NOV	DEC	
							14.7
							8.2
							3
							10.1
							Year Average

nal Intakes

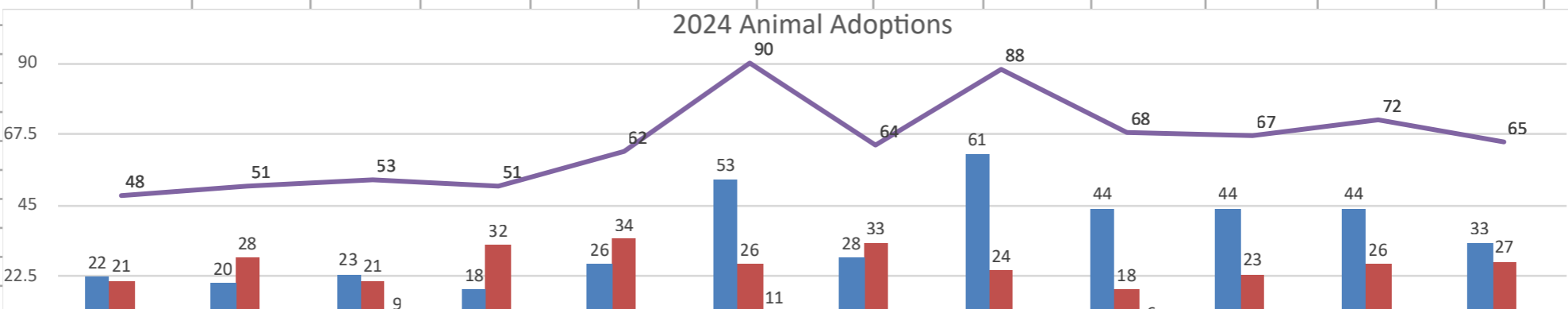
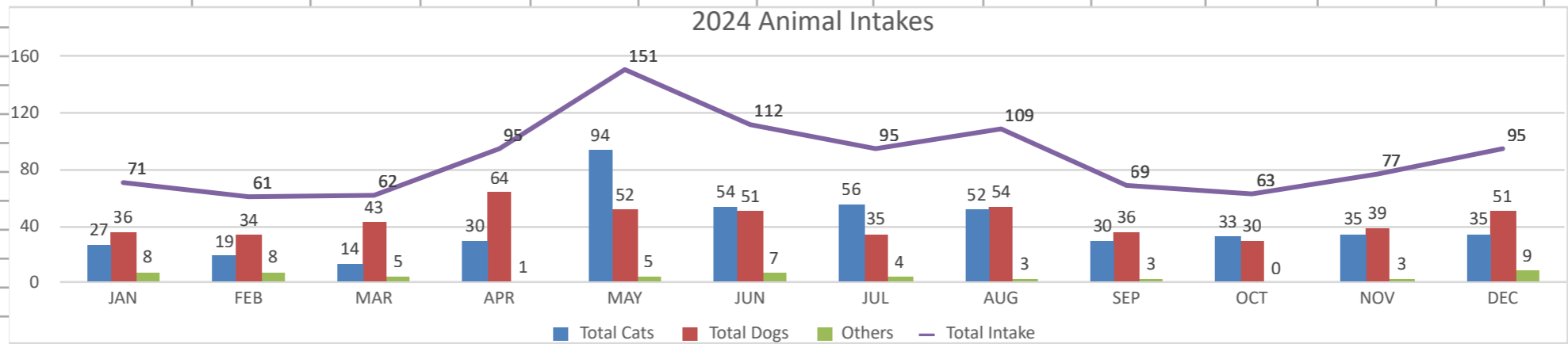


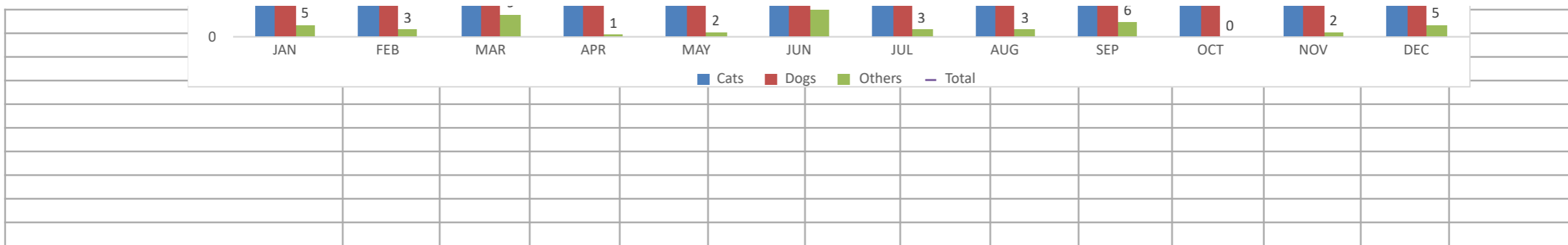

BRHA Monthly 2024 / YTD Statistics													
<b>INTAKE</b>	<b>JAN</b>	<b>FEB</b>	<b>MAR</b>	<b>APR</b>	<b>MAY</b>	<b>JUN</b>	<b>JUL</b>	<b>AUG</b>	<b>SEP</b>	<b>OCT</b>	<b>NOV</b>	<b>DEC</b>	<b>YTD</b>
<b>Total Cats</b>	<b>27</b>	<b>19</b>	<b>14</b>	<b>30</b>	<b>94</b>	<b>54</b>	<b>56</b>	<b>52</b>	<b>30</b>	<b>33</b>	<b>35</b>	<b>35</b>	<b>479</b>
Stray Cats	7	7	5	15	38	34	34	24	14	8	11	6	203
Owner Surrender Cats	9	12	6	5	42	7	21	27	14	24	20	9	196
Returned Adoption Cats	2	0	3	0	1	3	1	1	2	1	4	2	20
Cats Brought in by Agencies	0	0	0	0	0	0	0	0	0	0	2	0	2
Transferred In Cats	9	0	0	10	13	10	0	0	0	0	0	18	60
<b>Total Dogs</b>	<b>36</b>	<b>34</b>	<b>43</b>	<b>64</b>	<b>52</b>	<b>51</b>	<b>35</b>	<b>54</b>	<b>36</b>	<b>30</b>	<b>39</b>	<b>51</b>	<b>525</b>
Stray Dogs	14	18	18	17	23	21	20	20	19	13	18	16	217
Owner Surrender Dogs	16	15	20	31	20	25	8	15	9	10	18	25	212
Returned Adoption Dogs	1	1	1	1	2	3	3	2	2	3	0	1	20
Dogs Brought in by Agencies	8	3	2	6	3	4	4	3	4	2	3	6	48
Transferred in Dogs	2	0	2	8	3	0	0	18	13	2	0	9	57
<b>Others</b>	<b>8</b>	<b>8</b>	<b>5</b>	<b>1</b>	<b>5</b>	<b>7</b>	<b>4</b>	<b>3</b>	<b>3</b>	<b>0</b>	<b>3</b>	<b>9</b>	<b>56</b>
<i>Total Intake</i>	<b>71</b>	<b>61</b>	<b>62</b>	<b>95</b>	<b>151</b>	<b>112</b>	<b>95</b>	<b>109</b>	<b>69</b>	<b>63</b>	<b>77</b>	<b>95</b>	<b>1060</b>
<b>DISPOSITION</b>													
<b>Cats</b>													
Adopted	22	20	23	18	26	53	28	61	44	44	44	33	416
Medical Euth	2	1	2	1	1	5	1	2	2	2	1	1	21
Ferral Euth	0	1	0	0	2	0	0	1	2	1	0	0	7
Born in care	0	0	0	0	7	10	0	0	0	0	0	0	17
Died in care	2	0	0	0	3	7	4	2	0	4	0	0	22
Reclaim	0	1	0	2	1	0	0	1	1	1	3	1	11
Transfer Out	0	0	0	0	0	0	0	0	0	3	0	0	3
<i>Total Cat Outcomes</i>	<b>26</b>	<b>23</b>	<b>25</b>	<b>21</b>	<b>40</b>	<b>75</b>	<b>33</b>	<b>67</b>	<b>49</b>	<b>55</b>	<b>48</b>	<b>35</b>	<b>497</b>
<i>Total EOM Cat Population</i>	<b>38</b>	<b>37</b>	<b>23</b>	<b>32</b>	<b>92</b>	<b>85</b>	<b>109</b>	<b>95</b>	<b>72</b>	<b>51</b>	<b>34</b>	<b>33</b>	
<b>Dogs</b>													
Adopted	21	28	21	32	34	26	33	24	18	23	26	27	313
Born in Care	8	0	0	0	0	0	0	0	0	0	0	0	8
Euth by Medical	0	1	1	0	0	0	0	0	1	3	0	2	8

Euth due to Aggression	1	0	2	2	1	1	1	2	1	0	0	1	12
Euth Court Ordered	0	0	0	2	0	0	0	0	0	0	0	0	2
Died in care	0	0	0	0	0	0	0	0	0	0	0	0	0
Reclaim	12	16	15	9	14	21	17	20	14	10	16	15	179
Transfer Out	1	0	3	0	1	0	0	0	2	4	0	0	11
<b>Total Dog Outcomes</b>	<b>43</b>	<b>45</b>	<b>42</b>	<b>45</b>	<b>50</b>	<b>48</b>	<b>51</b>	<b>46</b>	<b>36</b>	<b>40</b>	<b>42</b>	<b>45</b>	<b>533</b>
<b>Total EOM Dog Population</b>	<b>39</b>	<b>30</b>	<b>29</b>	<b>38</b>	<b>36</b>	<b>38</b>	<b>24</b>	<b>29</b>	<b>32</b>	<b>30</b>	<b>26</b>	<b>31</b>	
<b>Others</b>													
Other Adoptions	5	3	9	1	2	11	3	3	6	0	2	5	50
Other Died	0	0	0	0	0	0	0	0	0	0	0	0	0
Reclaim Other	0	0	0	0	0	0	0	0	0	0	0	0	0
Transfer Out	0	0	0	0	0	0	0	0	0	0	0	0	0
Other Born in Care	0	0	0	0	0	0	0	0	0	0	0	0	0
Others Brought in Agencies	0	0	0	0	0	0	0	0	0	0	0	0	0
<b>Total Others Outcomes</b>	<b>5</b>	<b>3</b>	<b>9</b>	<b>1</b>	<b>2</b>	<b>11</b>	<b>3</b>	<b>3</b>	<b>6</b>	<b>0</b>	<b>2</b>	<b>5</b>	<b>50</b>
<b>Total EOM Other Population</b>	<b>1</b>	<b>6</b>	<b>1</b>	<b>1</b>	<b>4</b>	<b>0</b>	<b>1</b>	<b>3</b>	<b>1</b>	<b>0</b>	<b>1</b>	<b>5</b>	
<b>Total Monthly Disposition</b>	<b>74</b>	<b>71</b>	<b>76</b>	<b>67</b>	<b>92</b>	<b>134</b>	<b>87</b>	<b>116</b>	<b>91</b>	<b>95</b>	<b>92</b>	<b>85</b>	<b>1080</b>
<b>ADOPTED</b>	48	51	53	51	62	90	64	88	68	67	72	65	779
<b>% Adopted</b>	65%	72%	70%	76%	67%	67%	74%	76%	75%	71%	78%	76%	72%
<b>Transferred out</b>	1	0	3	0	1	0	0	0	2	7	0	0	14
<b>Transferred In</b>	11	0	2	18	16	10	0	18	13	2	0	27	117
<b>Born in Care</b>	8	0	0	0	7	10	0	0	0	0	0	0	25
<b>Euthanasia</b>	3	3	5	5	4	6	2	5	6	6	1	4	50
<b>% Euthanasia</b>	4%	4%	7%	7%	4%	4%	2%	4%	7%	6%	1%	5%	5%
<b>Reclaim Dogs</b>	86%	89%	83%	53%	61%	100%	85%	100%	74%	77%	89%	94%	81%
<b>Reclaim Cats</b>	0%	14%	0%	13%	3%	0%	0%	4%	7%	13%	27%	1%	7%
<b>Overall Shelter Reclaim %</b>	57%	68%	65%	34%	25%	38%	31%	48%	45%	52%	66%	73%	48%
<b>Died</b>	2	0	0	0	3	7	4	2	0	4	0	0	22



<b>YTD Disposition</b>	<b>74</b>	<b>145</b>	<b>221</b>	<b>288</b>	<b>380</b>	<b>514</b>	<b>605</b>	<b>731</b>	<b>822</b>	<b>917</b>	<b>1009</b>		<b>5706</b>
<b>Total Officer Intake</b>	8	3	2	6	3	4	4	3	4	2	5	6	<b>50</b>
Adoption Totals													
	<b>JAN</b>	<b>FEB</b>	<b>MAR</b>	<b>APR</b>	<b>MAY</b>	<b>JUN</b>	<b>JUL</b>	<b>AUG</b>	<b>SEP</b>	<b>OCT</b>	<b>NOV</b>	<b>DEC</b>	
Cats	22	20	23	18	26	53	28	61	44	44	44	33	
Dogs	21	28	21	32	34	26	33	24	18	23	26	27	
Others	5	3	9	1	2	11	3	3	6	0	2	5	
<b>Total</b>	<b>48</b>	<b>51</b>	<b>53</b>	<b>51</b>	<b>62</b>	<b>90</b>	<b>64</b>	<b>88</b>	<b>68</b>	<b>67</b>	<b>72</b>	<b>65</b>	<b>779</b>
Legnth of Stay Mo													
	<b>JAN</b>	<b>FEB</b>	<b>MAR</b>	<b>APR</b>	<b>MAY</b>	<b>JUN</b>	<b>JUL</b>	<b>AUG</b>	<b>SEP</b>	<b>OCT</b>	<b>NOV</b>	<b>DEC</b>	
Cats	37.1	40.6	31.4	36.8	44.8	54.9	46.3	41.5	25.6	13.2	16	12.6	40.2
Dogs	26.6	9.6	21.4	18.5	29.3	13.9	11.3	19.5	16	10.8	6	8.8	18.5
Others	8.03	13.05	6.75	6	14.3	3.2	13	36.9	11.4	0	3.3	3.85	7.31
<b>Average Total</b>	<b>28.7</b>	<b>19.5</b>	<b>22.7</b>	<b>24.9</b>	<b>38.6</b>	<b>33.6</b>	<b>31.3</b>	<b>30.4</b>	<b>19.6</b>	<b>12.1</b>	<b>8.43</b>	<b>8.3</b>	<b>22.00</b>
													Year Average



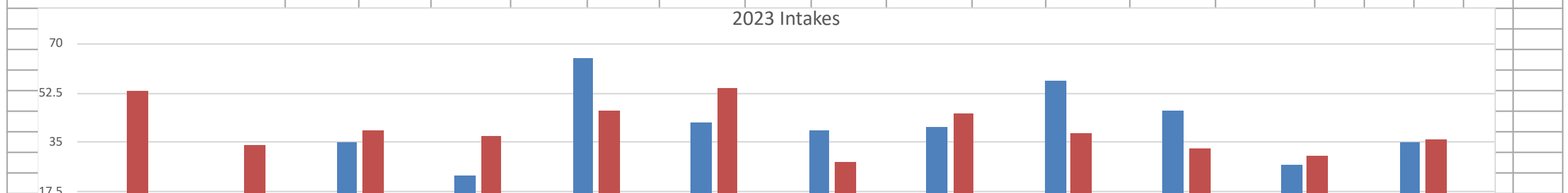


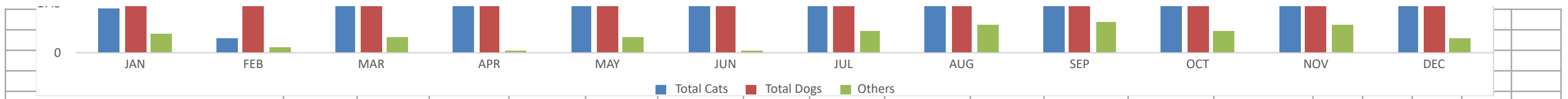
BRHA Monthly 2023 / YTD Statistics													
<b>INTAKE</b>	<b>JAN</b>	<b>FEB</b>	<b>MAR</b>	<b>APR</b>	<b>MAY</b>	<b>JUN</b>	<b>JUL</b>	<b>AUG</b>	<b>SEP</b>	<b>OCT</b>	<b>NOV</b>	<b>DEC</b>	<b>YTD</b>
<b>Total Cats</b>	<b>16</b>	<b>5</b>	<b>35</b>	<b>23</b>	<b>65</b>	<b>42</b>	<b>39</b>	<b>40</b>	<b>57</b>	<b>46</b>	<b>27</b>	<b>35</b>	<b>430</b>
Stray Cats	8	2	18	8	17	20	28	19	7	21	7	11	166
Owner Surrender Cats	8	0	14	12	48	20	11	20	47	18	17	20	235
Returned Adoption Cats	0	3	3	3	0	2	0	1	3	7	3	4	29
<b>Total Dogs</b>	<b>53</b>	<b>34</b>	<b>39</b>	<b>37</b>	<b>46</b>	<b>54</b>	<b>28</b>	<b>45</b>	<b>38</b>	<b>33</b>	<b>30</b>	<b>36</b>	<b>473</b>
Stray Dogs	17	22	14	20	22	25	26	22	26	20	11	17	242
Owner Surrender Dogs	30	9	21	14	20	25	11	21	6	13	15	13	198
Returned Adoption Dogs	4	1	4	2	4	4	4	2	6	0	1	1	33
<b>Others</b>	<b>7</b>	<b>2</b>	<b>6</b>	<b>1</b>	<b>6</b>	<b>1</b>	<b>8</b>	<b>10</b>	<b>11</b>	<b>8</b>	<b>10</b>	<b>5</b>	<b>75</b>
<i>Total Intake</i>	<b>76</b>	<b>41</b>	<b>80</b>	<b>61</b>	<b>117</b>	<b>97</b>	<b>75</b>	<b>95</b>	<b>106</b>	<b>87</b>	<b>67</b>	<b>76</b>	<b>978</b>
<b>DISPOSITION</b>													
<b>Cats</b>													
Adopted	60	23	33	22	18	22	57	35	24	40	46	45	425
Medical Euth	7	1	1	0	0	1	0	0	0	0	3	4	17
Ferral Euth	0	0	1	2	0	2	0	1	0	0	0	2	8
Born in care	6	0	0	0	0	0	0	0	0	0	0	0	6
Died in care	0	0	0	0	1	6	3	1	1	4	5	0	21
Reclaim	3	0	1	3	1	1	2	2	1	0	1	1	16
Transfer Out	0	0	0	0	0	0	0	0	15	3	1	0	19
<i>Total Cat Outcomes</i>	<b>76</b>	<b>24</b>	<b>36</b>	<b>27</b>	<b>20</b>	<b>32</b>	<b>62</b>	<b>39</b>	<b>41</b>	<b>47</b>	<b>56</b>	<b>52</b>	<b>512</b>
<i>Total EOM Cat Population</i>	<b>70</b>	<b>51</b>	<b>49</b>	<b>44</b>	<b>87</b>	<b>96</b>	<b>71</b>	<b>73</b>	<b>81</b>	<b>84</b>	<b>54</b>	<b>37</b>	
<b>Dogs</b>													
Adopted	27	24	23	19	18	17	27	22	16	18	16	32	259
Born in Care	0	0	7	0	0	0	0	0	0	0	0	8	15
Euth by Medical	0	0	3	0	1	0	0	1	1	0	0	0	6
Euth due to Aggression	1	0	2	0	0	0	0	0	2	0	2	0	7
Euth Court Ordered	0	0	0	0	0	1	0	0	0	0	0	0	1
Died in care	0	0	7	0	0	0	1	0	0	1	0	0	9
Reclaim	16	15	9	18	21	19	12	19	18	13	12	11	183
Transfer In	3	0	0	0	0	0	0	0	0	0	0	0	3
Transfer Out	0	0	0	0	0	0	0	0	0	1	0	1	2
<i>Total Dog Outcomes</i>	<b>47</b>	<b>39</b>	<b>51</b>	<b>37</b>	<b>40</b>	<b>37</b>	<b>40</b>	<b>42</b>	<b>37</b>	<b>33</b>	<b>30</b>	<b>52</b>	<b>485</b>
<i>Total EOM Dog Population</i>	<b>44</b>	<b>39</b>	<b>32</b>	<b>30</b>	<b>33</b>	<b>49</b>	<b>33</b>	<b>35</b>	<b>40</b>	<b>36</b>	<b>38</b>	<b>36</b>	
<b>Others</b>													
Other Died	0	0	0	0	0	0	0	0	1	0	0	0	1
Other Adoptions	6	3	6	6	5	4	0	6	4	4	0	2	46
Reclaim Other	0	0	0	0	0	0	0	3	0	0	0	0	3
Transfer Out	0	0	0	0	0	0	0	0	2	0	0	0	2
Other Born in Care	0	0	0	0	0	0	0	0	0	0	0	0	0

<b>Total Others Outcomes</b>	6	3	6	6	5	4	0	9	7	4	0	2	52
<b>Total EOM Other Population</b>	2	2	1	0	1	0	3	2	11	13	2	0	
<b>Total Monthly Disposition</b>	129	66	93	70	65	73	102	90	85	84	86	106	1049
<b>ADOPTED</b>	93	50	62	47	41	43	84	63	44	62	62	79	730
<b>% Adopted</b>	72%	76%	67%	67%	63%	59%	82%	70%	52%	74%	72%	75%	70%
<b>Transferreed out</b>	0	0	0	0	0	0	0	0	17	4	1	1	0
<b>Transferred In</b>	3	0	0	0	0	0	0	0	0	0	0	0	0
<b>Born in Care</b>	6	0	7	0	0	0	0	0	0	0	0	8	21
<b>Euthanasia</b>	8	1	7	2	1	4	0	2	3	0	5	6	39
<b>% Euthanasia</b>	6%	2%	8%	3%	2%	5%	0%	2%	4%	0%	6%	6%	4%
<b>Reclaim</b>	19	15	10	21	22	20	14	21	19	13	13	12	199
<b>% Reclaim</b>	15%	23%	11%	30%	34%	27%	14%	23%	22%	15%	15%	11%	19%
<b>Died</b>	0	0	7	0	1	6	4	1	1	5	5	0	30
<b>YTD Disposition</b>	129	66	93	70	65	73	102	90	85	84	86	106	1049
<b>Officer Intake</b>	8	10	7	6	7	9	5	3	6	4	5	4	74

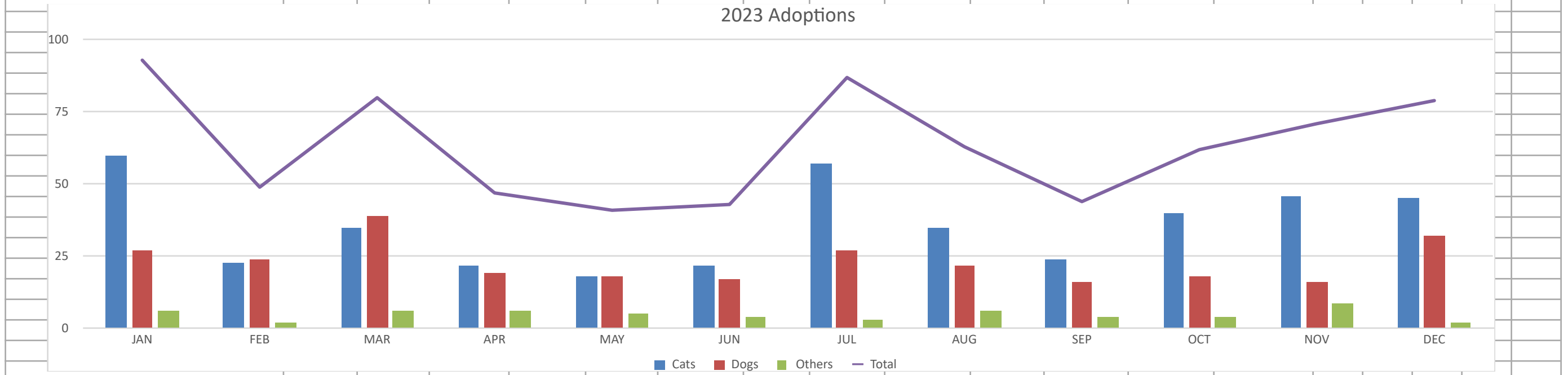
Adoptions

	JAN	FEB	MAR	APR	MAY	JUN	JUL	AUG	SEP	OCT	NOV	DEC
Cats	60	23	35	22	18	22	57	35	24	40	46	45
Dogs	27	24	39	19	18	17	27	22	16	18	16	32
Others	6	2	6	6	5	4	3	6	4	4	9	2
Total	93	49	80	47	41	43	87	63	44	62	71	79





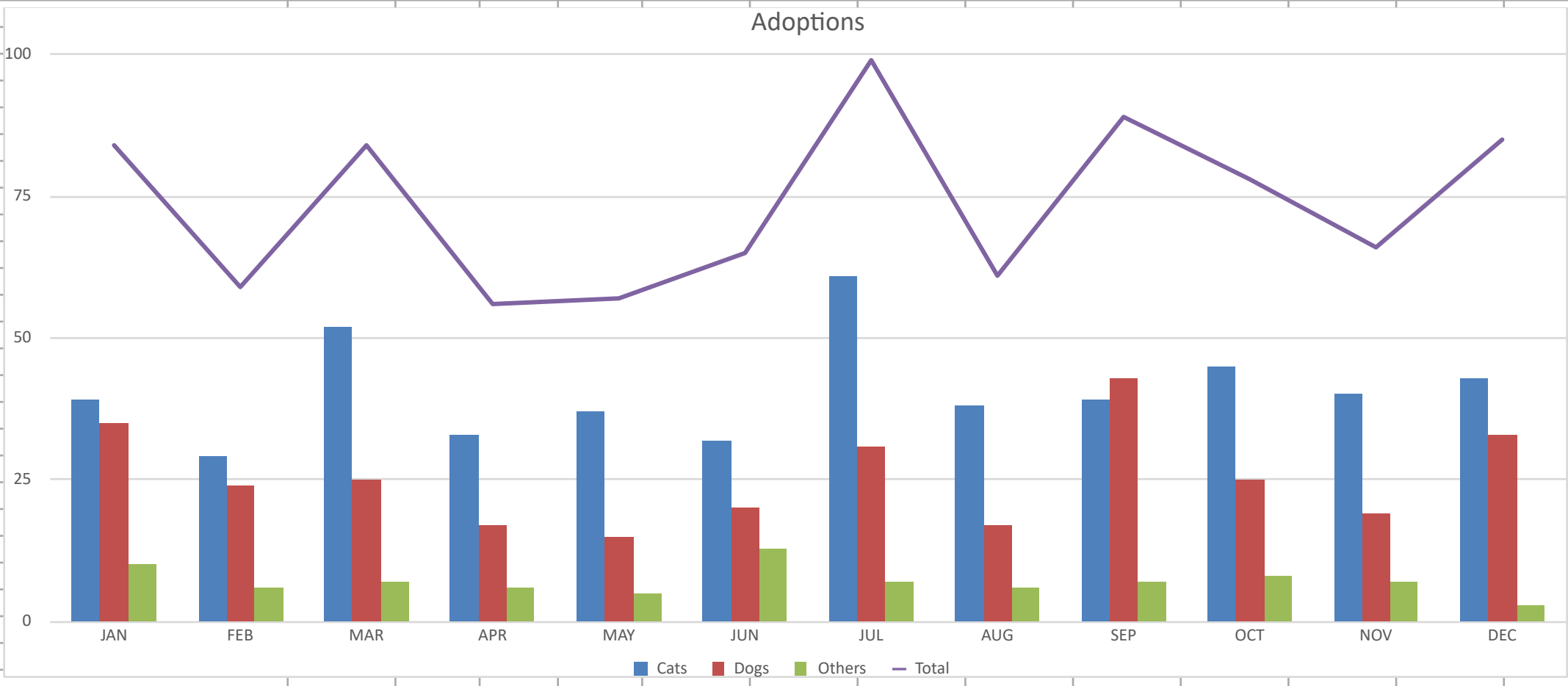
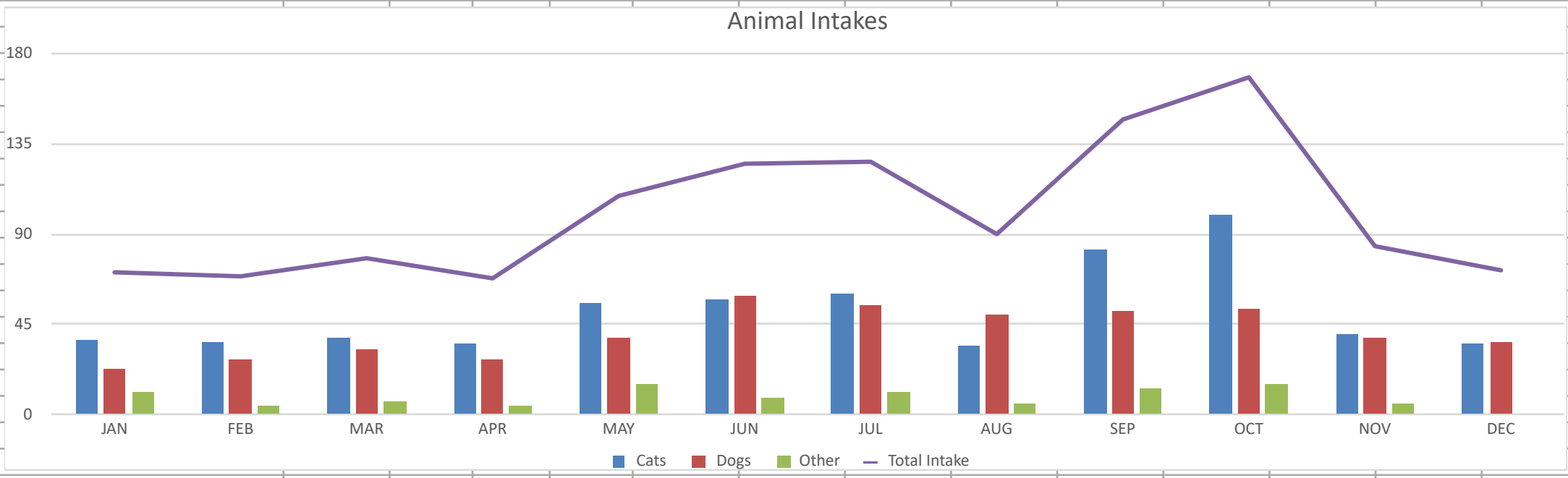
2023 Adoptions



**BRHA Monthly 2022 / YTD Statistics**

<b>INTAKE</b>	<b>JAN</b>	<b>FEB</b>	<b>MAR</b>	<b>APR</b>	<b>MAY</b>	<b>JUN</b>	<b>JUL</b>	<b>AUG</b>	<b>SEP</b>	<b>OCT</b>	<b>NOV</b>	<b>DEC</b>	<b>YTD</b>
Cats	37	36	38	35	56	57	60	34	82	100	40	35	610
Dogs	23	28	33	28	38	59	55	50	52	53	38	36	493
Other	11	5	7	5	15	9	11	6	13	15	6	1	104
<b>Total Intake</b>	<b>71</b>	<b>69</b>	<b>78</b>	<b>68</b>	<b>109</b>	<b>125</b>	<b>126</b>	<b>90</b>	<b>147</b>	<b>168</b>	<b>84</b>	<b>72</b>	<b>1207</b>
<b>DISPOSITION</b>													
<b>Cats</b>													
Adopted	39	29	52	33	37	32	61	38	39	45	40	40	485
Medical Euth	2	3	4	3	3	2	3	2	4	2	4	1	33
Ferral Euth	1	2	6	1	1	5	2	4	2	12	0	5	41
Born in care	0	0	0	0	14	12	8	0	0	16	8	0	58
Died in care	0	2	1	1	4	1	0	2	0	0	2	2	15
Reclaim	1	2	1	0	9	3	0	1	0	1	2	0	20
Transfer Out	0	0	0	0	0	0	0	0	0	0	0	0	0
<b>Total Cat Outcomes</b>		<b>38</b>	<b>64</b>	<b>38</b>	<b>68</b>	<b>55</b>	<b>74</b>	<b>47</b>	<b>45</b>	<b>76</b>	<b>56</b>	<b>48</b>	<b>652</b>
<b>Total EOM Cat Population</b>	<b>100</b>	<b>97</b>	<b>77</b>	<b>73</b>	<b>73</b>	<b>89</b>	<b>84</b>	<b>66</b>	<b>103</b>	<b>143</b>	<b>139</b>	<b>128</b>	
<b>Dogs</b>													
Adopted	35	24	25	17	15	20	31	17	43	25	19	33	304
Born in Care	0	0	0	0	0	0	0	0	0	0	0	0	0
Euth by Medical	2	0	0	1	0	3	0	3	1	1	0	0	11
Euth due to Aggression	1	2	0	1	1	0	2	8	0	1	0	1	17
Euth Court Ordered	0	0	0	0	0	0	0	0	0	0	0	0	0
Died in care	1	1	0	0	0	0	0	0	0	0	0	0	2
Reclaim	8	9	16	6	12	24	30	14	21	21	11	8	180
Transfer In	0	0	0	2	3	0	0	0	0	3	0	2	10
Transfer Out	0	0	0	0	1	0	1	1	4	2	2	0	11
<b>Total Dog Outcomes</b>	<b>47</b>	<b>36</b>	<b>41</b>	<b>27</b>	<b>37</b>	<b>47</b>	<b>64</b>	<b>43</b>	<b>69</b>	<b>53</b>	<b>32</b>	<b>43</b>	<b>539</b>
<b>Total EOM Dog Population</b>	<b>41</b>	<b>33</b>	<b>27</b>	<b>32</b>	<b>42</b>	<b>57</b>	<b>49</b>	<b>53</b>	<b>36</b>	<b>38</b>	<b>44</b>	<b>40</b>	
<b>Others</b>													
Other Died	0	0	0	0	1	3	0	0	4	2	1	0	11
Other Adoptions	10	6	7	6	5	13	7	6	7	8	7	3	85
Reclaim Other	0	0	0	0	0	0	0	0	0	0	0	0	0
Transfer Out	0	0	0	0	0	0	0	0	0	0	0	0	0
Other Born in Care	0	0	0	0	0	0	0	0	0	0	0	0	0
<b>Total Others Outcomes</b>	<b>10</b>	<b>6</b>	<b>7</b>	<b>6</b>	<b>6</b>	<b>16</b>	<b>7</b>	<b>6</b>	<b>11</b>	<b>10</b>	<b>8</b>	<b>3</b>	<b>96</b>
<b>Total EOM Other Population</b>	<b>6</b>	<b>5</b>	<b>5</b>	<b>7</b>	<b>13</b>	<b>3</b>	<b>8</b>	<b>7</b>	<b>10</b>	<b>4</b>	<b>3</b>	<b>1</b>	
<b>Total Monthly Disposition</b>	<b>57</b>	<b>80</b>	<b>112</b>	<b>71</b>	<b>111</b>	<b>118</b>	<b>145</b>	<b>96</b>	<b>125</b>	<b>139</b>	<b>96</b>	<b>94</b>	<b>1244</b>
<b>ADOPTED</b>	84	59	84	56	57	65	99	61	89	78	26	76	<b>834</b>
<b>% Adopted</b>	147%	74%	75%	79%	51%	55%	68%	64%	71%	56%	27%	81%	<b>67%</b>
<b>Transferreed out</b>	0	0	0	0	1	0	1	1	4	2	2	0	<b>11</b>
<b>Transferred In</b>	0	0	0	2	3	0	0	0	0	3	0	2	<b>10</b>
<b>Born in Care</b>	0	0	0	0	14	12	8	0	0	16	8	0	<b>58</b>
<b>Euthanasia</b>	6	7	0	6	5	10	7	17	7	16	4	7	<b>92</b>
<b>% Euthanasia</b>	11%	9%	0%	8%	5%	8%	5%	18%	6%	12%	4%	7%	<b>7%</b>
<b>Reclaim</b>	9	11	17	6	21	27	30	15	21	22	13	8	<b>200</b>

<b>% Reclaim</b>	16%	14%	15%	8%	19%	23%	21%	16%	17%	16%	14%	9%	<b>16%</b>
<b>Died</b>	1	3	1	1	4	1	0	2	0	0	2	2	<b>17</b>
<b>YTD Disposition</b>	<b>57</b>	<b>80</b>	<b>112</b>	71	<b>111</b>	<b>118</b>	<b>145</b>	<b>96</b>	<b>125</b>	<b>139</b>	<b>96</b>	<b>94</b>	<b>1244</b>
<b>Officer Intake</b>	6	6	8	4	5	4	12	9	10	8	15	13	<b>100</b>



Adoptions																		
	JAN	FEB	MAR	APR	MAY	JUN	JUL	AUG	SEP	OCT	NOV	DEC						
Cats	39	29	52	33	37	32	61	38	39	45	40	43						
Dogs	35	24	25	17	15	20	31	17	43	25	19	33						
Others	10	6	7	6	5	13	7	6	7	8	7	3						
Total	84	59	84	56	57	65	99	61	89	78	66	85	883					



BRHA Monthly 2021 / YTD Statistics													
INTAKE	JAN	FEB	MAR	APR	MAY	JUN	JUL	AUG	SEP	OCT	NOV	DEC	YTD
Cats	25	50	49	29	68	94	42	30	45	52	52	40	576
Dogs	29	31	34	35	25	39	41	14	22	61	27	65	423
Other	5	2	9	0	5	1	7	3	3	8	3	20	66
<b>Total Intake</b>	<b>59</b>	<b>83</b>	<b>92</b>	<b>64</b>	<b>98</b>	<b>134</b>	<b>90</b>	<b>47</b>	<b>70</b>	<b>121</b>	<b>82</b>	<b>125</b>	<b>1065</b>
DISPOSITION													
<b>Cats</b>													
Adopted	30	29	27	33	22	35	34	27	51	39	39	47	413
Medical Euth	0	0	3	1	5	10	3	5	7	0	2	1	37
Ferral Euth	0	0	0	0	0	0	0	0	0	2	5	2	9
Born in care	0	0	0	4	17	12	0	10	6	2	0	0	51
Died in care	0	0	0	2	6	13	2	4	2	0	1	4	34
Reclaim	4	5	3	2	4	3	1	1	5	8	2	0	38
Transfer Out	0	4	0	0	0	0	0	0	0	0	0	0	4
<b>Total Cats</b>	<b>34</b>	<b>38</b>	<b>33</b>	<b>42</b>	<b>54</b>	<b>73</b>	<b>40</b>	<b>47</b>	<b>71</b>	<b>51</b>	<b>49</b>	<b>54</b>	<b>586</b>
<b>Dogs</b>													
Adopted	5	16	10	17	11	15	9	5	11	17	17	28	161
Born in Care	0	0	0	0	3	0	0	0	0	0	0	0	3
Euth by Medical	0	0	0	0	3	0	0	0	0	0	0	0	3
Euth due to	0	0	2	2	3	7	1	3	3	5	1	2	29
Euth Court Ordered	0	0	0	0	0	0	0	0	0	0	0	1	1
Died in care	0	0	0	0	3	0	0	0	1	0	0	0	4
Reclaim	8	9	17	9	7	16	26	6	15	22	10	14	159
Transfer In	0	1	4	1	0	3	0	0	0	0	0	23	32
Transfer Out	0	8	1	1	1	0	0	0	0	0	0	0	11
<b>Total Dogs</b>	<b>13</b>	<b>34</b>	<b>34</b>	<b>30</b>	<b>31</b>	<b>41</b>	<b>36</b>	<b>14</b>	<b>30</b>	<b>44</b>	<b>28</b>	<b>68</b>	<b>403</b>
<b>Others</b>													
Other Died	0	0	0	0	0	0	0	0	0	0	0	1	1
Other Adoptions	5	2	3	6	1	1	1	10	3	8	4	18	62
Reclaim Other	0	0	0	0	0	0	0	0	0	0	0	0	0
Transfer Out	0	0	0	0	0	0	0	0	0	0	0	0	0
Other Born in Care	0	0	0	0	0	0	0	0	0	0	0	0	0
<b>Total Others</b>	<b>5</b>	<b>2</b>	<b>3</b>	<b>6</b>	<b>1</b>	<b>1</b>	<b>1</b>	<b>10</b>	<b>3</b>	<b>8</b>	<b>4</b>	<b>19</b>	<b>63</b>
<b>Total Monthly Disposition</b>	<b>52</b>	<b>74</b>	<b>70</b>	<b>78</b>	<b>86</b>	<b>115</b>	<b>77</b>	<b>71</b>	<b>104</b>	<b>103</b>	<b>81</b>	<b>141</b>	<b>1052</b>
<b>ADOPTED</b>	<b>40</b>	<b>47</b>	<b>40</b>	<b>56</b>	<b>34</b>	<b>51</b>	<b>44</b>	<b>42</b>	<b>65</b>	<b>64</b>	<b>60</b>	<b>93</b>	<b>636</b>
<b>% Adopted</b>	<b>77%</b>	<b>64%</b>	<b>57%</b>	<b>72%</b>	<b>40%</b>	<b>44%</b>	<b>57%</b>	<b>59%</b>	<b>63%</b>	<b>62%</b>	<b>74%</b>	<b>66%</b>	<b>60%</b>
<b>Transferred out</b>	<b>0</b>	<b>12</b>	<b>1</b>	<b>1</b>	<b>1</b>	<b>0</b>	<b>0</b>	<b>0</b>	<b>0</b>	<b>0</b>	<b>0</b>	<b>0</b>	<b>15</b>
<b>Transferred In</b>	<b>0</b>	<b>1</b>	<b>4</b>	<b>1</b>	<b>0</b>	<b>3</b>	<b>0</b>	<b>0</b>	<b>0</b>	<b>0</b>	<b>0</b>	<b>23</b>	<b>32</b>
<b>Born in Care</b>	<b>0</b>	<b>0</b>	<b>0</b>	<b>0</b>	<b>3</b>	<b>12</b>	<b>0</b>	<b>0</b>	<b>0</b>	<b>0</b>	<b>0</b>	<b>0</b>	<b>15</b>
<b>Euthanasia</b>	<b>0</b>	<b>0</b>	<b>5</b>	<b>3</b>	<b>11</b>	<b>17</b>	<b>4</b>	<b>8</b>	<b>10</b>	<b>7</b>	<b>8</b>	<b>6</b>	<b>79</b>
<b>% Euthanasia</b>	<b>0%</b>	<b>0%</b>	<b>7%</b>	<b>4%</b>	<b>13%</b>	<b>15%</b>	<b>5%</b>	<b>11%</b>	<b>10%</b>	<b>7%</b>	<b>10%</b>	<b>4%</b>	<b>8%</b>
<b>Reclaim</b>	<b>12</b>	<b>14</b>	<b>20</b>	<b>11</b>	<b>11</b>	<b>19</b>	<b>27</b>	<b>7</b>	<b>20</b>	<b>30</b>	<b>12</b>	<b>14</b>	<b>197</b>
<b>% Reclaim</b>	<b>23%</b>	<b>19%</b>	<b>29%</b>	<b>14%</b>	<b>13%</b>	<b>17%</b>	<b>35%</b>	<b>10%</b>	<b>19%</b>	<b>29%</b>	<b>15%</b>	<b>10%</b>	<b>19%</b>
<b>Died</b>	<b>0</b>	<b>0</b>	<b>0</b>	<b>2</b>	<b>9</b>	<b>13</b>	<b>2</b>	<b>4</b>	<b>3</b>	<b>0</b>	<b>1</b>	<b>4</b>	<b>38</b>
<b>YTD Disposition</b>	<b>52</b>	<b>74</b>	<b>70</b>	<b>78</b>	<b>86</b>	<b>115</b>	<b>77</b>	<b>71</b>	<b>104</b>	<b>103</b>	<b>81</b>	<b>141</b>	<b>1052</b>
<b>Officer Intake</b>	<b>4</b>	<b>4</b>	<b>10</b>	<b>1</b>	<b>6</b>	<b>4</b>	<b>3</b>	<b>4</b>	<b>6</b>	<b>20</b>	<b>5</b>	<b>7</b>	<b>74</b>

BRHA Monthly 2020 December / YTD Statistics													
INTAKE	JAN	FEB	MAR	APR	MAY	JUN	JUL	AUG	SEP	OCT	NOV	DEC	YTD
Cats	24	28	21	22	54	57	52	103	110	43	47	26	587
Dogs	27	37	29	49	50	23	41	33	39	32	21	27	408
Other	10	2	7	4	3	8	14	3	3	8	8	10	80
<b>Total Intake</b>	<b>61</b>	<b>67</b>	<b>57</b>	<b>75</b>	<b>107</b>	<b>88</b>	<b>107</b>	<b>139</b>	<b>152</b>	<b>83</b>	<b>76</b>	<b>63</b>	<b>1075</b>
DISPOSITION	JAN	FEB	MAR	APR	MAY	JUN	JUL	AUG	SEP	OCT	NOV	DEC	YTD
<b>Cats</b>													
Adopted	30	19	25	26	21	39	38	56	26	49	64	31	424
Medical Euth	0	1	2	0	1	7	2	2	4	1	4	2	26
Ferral Euth	1	2	0	0	0	0	0	0	0	0	0	0	3
Born in care	0	0	0	0	0	0	0	7	0	0	0	0	7
Died in care	0	0	1	0	2	2	1	21	2	5	1	0	35
Reclaim	1	3	0	0	1	2	1	0	5	5	5	0	23
Transfer Out	12	0	0	0	0	0	0	0	0	0	1	0	13
<b>Total Cats</b>	<b>44</b>	<b>25</b>	<b>28</b>	<b>26</b>	<b>25</b>	<b>50</b>	<b>42</b>	<b>86</b>	<b>37</b>	<b>60</b>	<b>75</b>	<b>33</b>	<b>531</b>
<b>Dogs</b>													
Adopted	24	22	11	22	25	15	15	11	14	10	10	21	200
Born in Care	0	0	0	0	0	0	0	0	0	0	0	0	0
Euth by Medical	0	0	0	2	0	0	1	0	0	0	1	0	4
Euth due to Aggression	0	0	12	2	0	6	0	0	4	4	3	0	31
Euth Court Ordered	0	0	1	0	0	0	0	1	0	0	0	0	2
Died in care	0	0	0	0	0	0	0	0	0	0	0	0	0
Reclaim	11	12	10	21	20	14	22	18	15	22	9	10	184
Transfer In	0	1	1	0	0	0	0	0	0	0	0	0	2
Transfer Out	7	5	0	1	0	0	0	0	1	0	0	0	14
<b>Total Dogs</b>	<b>42</b>	<b>40</b>	<b>35</b>	<b>48</b>	<b>45</b>	<b>35</b>	<b>38</b>	<b>30</b>	<b>34</b>	<b>36</b>	<b>23</b>	<b>31</b>	<b>437</b>
<b>OTHERS</b>													
Other Died	1	1	0	0	0	0	0	1	0	0	0	0	3
Other Adoptions	5	7	1	4	3	8	1	2	2	6	3	10	52
Reclaim Other	0	0	0	0	0	0	0	0	0	0	0	0	0
Transfer Out	0	0	0	0	0	0	0	0	0	0	3	0	3
Other Born in Care	0	7	0	0	0	0	0	0	0	0	0	0	7
<b>Total Others</b>	<b>6</b>	<b>15</b>	<b>1</b>	<b>4</b>	<b>3</b>	<b>8</b>	<b>1</b>	<b>3</b>	<b>2</b>	<b>6</b>	<b>6</b>	<b>10</b>	<b>65</b>
<b>Total Monthly Disposition</b>	<b>92</b>	<b>80</b>	<b>64</b>	<b>78</b>	<b>73</b>	<b>93</b>	<b>81</b>	<b>119</b>	<b>73</b>	<b>102</b>	<b>104</b>	<b>74</b>	<b>1033</b>
<b>ADOPTED</b>	59	52	39	47	47	74	57	70	73	65	77	62	722
<b>% Adopted</b>	64%	65%	61%	60%	64%	80%	70%	59%	100%	64%	74%	84%	70%
<b>Transferreed out</b>	19	5	0	1	0	0	0	0	1	0	4	0	30
<b>Transferred In</b>	0	1	1	0	0	0	0	0	0	0	0	0	2
<b>Born in Care</b>	0	0	0	0	0	0	0	0	0	0	0	0	0
<b>Euthanasia</b>	1	3	15	4	1	13	3	3	8	5	8	2	66
<b>% Euthanasia</b>	1%	4%	23%	5%	1%	14%	4%	3%	11%	5%	8%	3%	6%
<b>Reclaim</b>	12	15	10	21	21	16	23	18	20	27	14	10	207
<b>% Reclaim</b>	13%	19%	16%	27%	29%	17%	28%	15%	27%	26%	13%	14%	20%
<b>Died</b>	0	0	1	0	2	2	1	22	2	5	1	0	36
<b>YTD Disposition</b>	<b>92</b>	<b>80</b>	<b>64</b>	<b>78</b>	<b>73</b>	<b>93</b>	<b>81</b>	<b>119</b>	<b>73</b>	<b>102</b>	<b>104</b>	<b>74</b>	<b>1033</b>
<b>Officer Intake</b>	5	4	6	2	14	8	9	7	5	7	0	4	71